

Bosch Compress 3000

Domestic Hot Water Heat Pump



Get energy to heat water from the air! Reduces energy use by up to 60%

The Bosch Compress 3000 is an Air to Water heat pump designed to provide reliable and energy efficient hot water for the home. The Compress 3000 extracts heat from the air transferring it into the water. This system reduces energy use by up to 60% more than a conventional electric storage system saving the user energy.

The Bosch Compress 3000 has been developed using Bosch engineering excellence, which means that this is a reliable system that is easy to install and service. Its programmable functionality allows the user to maximise their savings while best suiting their hot water needs.

FEATURES AND BENEFITS

- ▶ Highly efficient heat pump – reduces energy use by up to 60%
- ▶ Programmable “smart” controls for user flexibility
- ▶ Large LCD display
- ▶ Noise Reduction Mode
- ▶ Time-of-use Tariff compatible – saving you energy costs
- ▶ Designed for ease of install, servicing and repair
- ▶ Energy use and operational statistics plus diagnostic functions

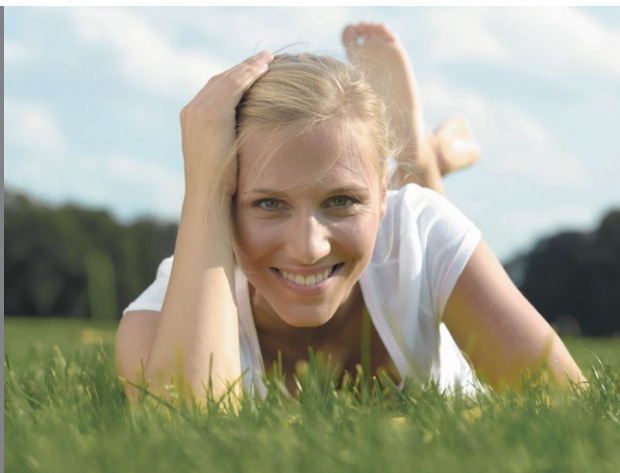
Please contact Bosch on 1300 30 70 37 or visit www.bosch-climate.com.au for more information.



BOSCH

Hot Water & Heating

Bosch Compress 3000



- ▶ Reduces energy use by up to 60%
- ▶ Smart controls for user flexibility; demand & running cost optimisation
- ▶ Suitable for 3-4 people

Specifications

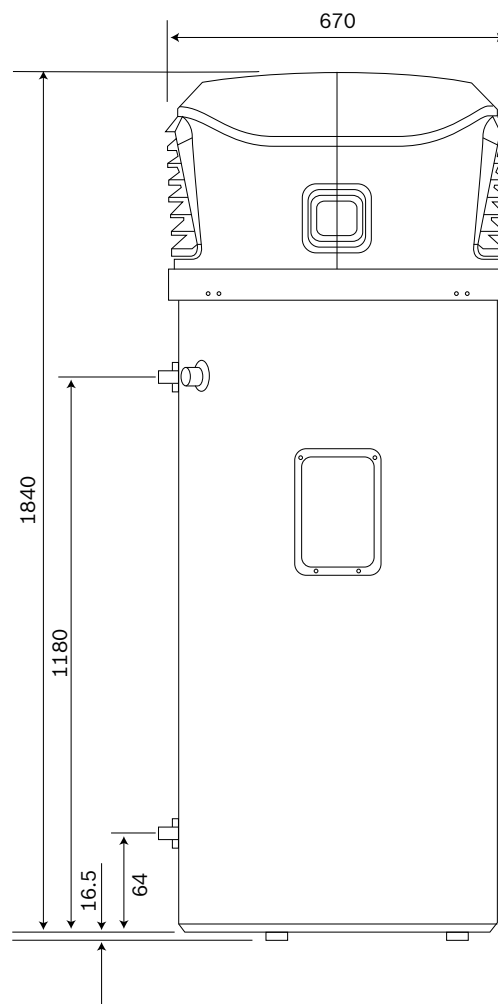
	Model
Bosch Product Code	7736501361
Heat Pump operating temperatures °C	+3°C / +40°C
Total operating temperatures °C	-7°C / +50°C
Outlet Water temperature °C	60°C - 65°C
Storage capacity (L)	270
Max Water Relief Pressure (kPa)	1000
Max Water Supply Pressure (kPa)	800
COP*	3.2
Heat Pump	
Heat Pump Max input (kW)	0.6
Max Current (A)	2.5
Heat Pump heating capacity (kW)	1.5
Back Up Electric Element	
Heat input (kW)	1.8
Total Max current (A)	7.8
Domestic Warranty	
Parts & Labour	2 Years
Tank (Part Only)	5 Years

STC Zones **

		STC Zones				
7736501361	Zone	1	2	3	4	5
Bosch Compress 3000	STCs	22	21	25	26	22

* COP as measured under the following conditions: air 15°C; RH 70%; water 15°C-60°C.

** Postcodes for each of the STC zones are available on: ret.cleanenergyregulator.gov.au



Note: Heat pumps use the ambient temperature in surrounding air to heat water in the tank. This means as the air temperature around the tank decreases, the time taken to heat the full tank increases. Customers in colder climate and frost prone areas should consider this when deciding which type of Bosch system is best for their circumstances. For detailed information on which Bosch hot water system best suits your needs please call Bosch.

Please contact us on 1300 30 70 37 or visit www.bosch-climate.com.au for more information.



BOSCH

Hot Water & Heating